



December, 2011



UPCOMING:
DVWGS ANNUAL KICKOFF LUNCHEON
January 29, 2012
12:30 PM
Springfield Country Club

Our annual luncheon will be held at the Springfield Country Club. Mark your calendars and plan to attend! This is a perfect time to get together with members to review the past season and prepare for the next one! It is always nice to compare notes with other members while the snow flakes come down to blanket our sleeping ponds and gardens.

Please send in the RSVP form, which can be found on the following page, with your check and menu selection. **Deadline is January 23, 2012!**

I hope to see you all there!! All you snowbirds..... we will miss you!

Speakers: For our Luncheon speaker, we are happy to introduce Roger Sears of Complete Aquatics. Roger has a BS degree from Virginia Tech in animal science. He has worked in creating water and landscaping features for over 18 years. His experience includes large projects at the Omaha Zoo and Epcot at Disney World. Roger puts this knowledge to use in his current position as a Technical Representative for Complete Aquatics, where his role is to interact with the area's water garden installers and retailers. Coming from a designing and building background, Roger has the unique sense of "been there, done that" type of approach and is able to help these businesses become more efficient and profitable.



Various topics that may be discussed include:

Natural water clarity, the use of copper to control algae (IonMate), water treatments and how they work, the role of oxygen in the water cycle, finding and fixing leaks, capturing and using rain water.

LUNCHEON DETAILS



DVWGS koi shirts

Existing inventory of **DVWGS shirts** (18) will be sold at the kick-off luncheon and pre-orders for 2012 can be made.

Don't forget to help us with our Luncheon **Raffle**. The Raffle is back by popular demand and this year we hope to make it even bigger with your support.

See more information on following pages!

Check should be made payable to DVWGS and be received by 1/23/2012

Cost is \$30.00 per person

Tear off this section and mail your selections to:
Cindy Weiss * 60 Festival Drive * Voorhees * NJ * 08043
Questions? Call Cindy Weiss at 856-504-6666

Names: _____

Phone #: _____

attending: _____

Choose from the following menu choices. Please signify # after your selection:

Chicken Marsala _____

Baked Tilapia with Brushetta Sauce _____

Tortellini Alfredo _____



Directions To Springfield Country Club
400 West Sproul Road * Springfield, PA * 19064

From Center City Philadelphia:

95 South to 476 North to Exit 3 (Swarthmore/Media). Turn right off exit on Baltimore Pike (Route 1). Proceed on Route 1 for approximately half a mile to Route 320 (West Sproul Road). Turn Left on Route 320. Springfield Country Club is located half a mile on the left.

-or-

I-76 West to 476 South to Exit 5 (Springfield/Lima). Turn Left off exit. Follow signs for 320 (West Sproul Road). Turn right on Route 320 (West Sproul Road). Springfield Country Club is located three quarters of a mile on the right.

From Pennsylvania Turnpike, Bucks County, Montgomery County:

Exit 20-Mid County off Pennsylvania Turnpike to 476 South towards Chester to Exit 5 (Springfield/Lima). Turn left off exit onto Route 1 North. Stay in right lane, follow signs for route 320 (West Sproul Road). Turn Right on Route 320 (West Sproul Road). Springfield Country Club is located three quarters of a mile on the right.

From Delaware:

I-95 North to exit 7 marked I-476 North (Blue Route). From the Blue Route to Exit 3 Springfield- Media. Turn right off exit onto Baltimore Pike (Route 1).

Proceed on Route 1 for approximately half a mile to Route 320 (West Sproul Road). Turn Left on Route 320. Springfield Country Club is located half a mile on the left.

From New York/ North Jersey:

Take New Jersey Turnpike to Exit 6/Pennsylvania Turnpike. Follow Turnpike to Exit 20 Mid County Exit. Follow sign for 476/ Chester (Blue Route) to Exit 5 (Springfield/Lima). Turn left off exit onto Route 1 North. Stay in right lane, follow signs for route 320 (West Sproul Road). Turn Right on Route 320 (West Sproul Road). Springfield Country Club is located three quarters of a mile on the right.

ADVERTISING AVAILABLE

Place your business ad in the newsletter to reach all of our pond members. Newsletters are also placed on our web site and are viewed by many others.

Rates per issue are as follows:

Full Page	\$100.00	Half Page	\$60.00
Quarter Page	\$35.00	Business Card	\$20.00

Send your ad as a PDF file to ccsnyder123@verizon.net Mail a check made out to DVWGS to Connie Snyder, Newsletter Editor, 1255 Buck Lane, West Chester, Pa. 19382.

NOTE: Members may place a non-business notice (such as free plants or fish, etc) in the newsletter or by email at no charge. Contact Victor at petfoodboy@aol.com to send out email notices to all members.

50/50 AND RAFFLE

Donated Items
needed for
January kickoff
Luncheon

WHEN: January 29th, 2012

WHERE: LUNCHEON AT SPRINGFIELD COUNTRY CLUB

DVWGS is requesting your donated items to be offered as raffle items at our luncheon

These items will be raffled off at the January 29th Luncheon as a club fundraiser.

PLEASE DONATE

NEW OR GENTLY USED
ITEMS

DVWGS MEMBERS:

We are requesting new and or gently used donated items, including but not limited to, garden and pond related things, books, jewelry, handmade items, pottery, baked goods, etc. Bring them to the luncheon on January 29, 2012. These items will be donated to the club for a fundraiser where all participating members will have a chance of winning the item at the final drawing.

COMMERCIAL MEMBERS:

In past years we have had commercial business members donate some wonderful items such as fountains, garden ornaments, etc. Please feel free to donate similar items this year, or your services.

We appreciate all your help and contributions!

Notify Connie Snyder of items you will be bringing to the banquet, or any items you would like to deliver early if you are not attending the luncheon.

ccsnyder123@verizon.net

610-399-1654



Hint: Save time and bring return address labels to affix to your raffle tickets!

We will also have 50/50 tickets for sale. Winning ticket, drawn at the luncheon, splits the pot with DVWGS. You need not be present to win. If you are not attending and want to participate, you can mail a check to DVWGS *1255 Buck Lane * West Chester Pa *19382.



Both the 50/50 tickets and the Raffle tickets are 6/\$5 or \$1 each.

LOOKING BACK

News from the PHS Fall Garden Festival at the Navy Yard in Philadelphia this past September

Hello All,

Good news! Our garden has been awarded 3RD PRIZE in the Individual Flower Garden category, of the 2011 City Gardens Contest sponsored by the Pennsylvania Horticultural Society.

The Awards Ceremony took place on Saturday, September 24, 2011 at the PHS Fall Garden Festival at the Navy Yard.

Thanks to everyone who has ever helped us with our Ponds and Gardens!

Best regards,

Suzanne Durand and Everett Ferri



Suzanne Durand and Everett Ferri



Stuart Ochman and Bill Fogle



Carol and Stuart Ochman and Bill Fogle

DVWGS was represented at the PHS Fall Garden festival at the Navy yard this past September. Our booth was manned by Jan and Bill Fogle, Jan Ewing and Marshall Hatfield, who helped spread the good word about our club. Other members seen mucking around in the mud during the day were, Linda and Sandy Grimwade (PHS volunteers at the Member's Plant Tent), Gail Brewer, Liz Ball and Rick Ray, Bonnie and Stuart Pastman, Sharon Reed and her sister-in-law, Carol and Stuart Ochman, Suzanne Durand and Everett Ferri.

Members Bulletin Board Page ALGAE anyone?

Submitted by Stuart Pastman

This year's problem and my (almost) futile 4 month fight...

As background, I have a 7 year old 4-5,000 gallon pond with lots of plants and 2 dozen large koi (24" plus) and usually 2-3 dozen new fry. My property is populated with trees, but the pond is only partially covered by a large oak tree, about half the pond is in direct sunlight. And BTW, I am a fanatic about clean, clear water.

For those of you who don't know me, my typical problem is sexually over-active koi, they spawn like crazy twice a year (and BTW the gestation period of koi is about 3 weeks). But this wasn't my problem this year. This year's problem was algae. I have my pond emptied and cleaned every year, usually in early May, and this year was no exception. One week after the pond cleaning, I thought I noticed a very slight green tint to the water but since it was only cleaned a week ago I thought it was my imagination- it couldn't be algae, not this early, not this soon. That was the first mistake on my "algae journey of 2011".

Within a week I realized my error. I quickly ran out and bought water hyacinths, which my "expert" at the local pond/koi shop had recommended. "If you have any algae problems, these will clear up the water and prevent ALL algae growth-guaranteed! Simply place them in the waterfall and filter the water through them, and you'll never have any algae problems again."

One week later, the problem was only worse. One of the predominant algae solution players is *AlgaeFix* by Pond Care, but I had a very bad experience with the product years earlier. The problem with *AlgaeFix* is that if you put in too

much or if the weather is hot, the *AlgaeFix* can rob oxygen out of the water and kill your fish. Two years earlier I was a little over zealous in its use, and killed 3 dozen fry in a holding tank- then everyone told me not to over use the product, oh well...

The other product I have found to fight string algae is *Green Clean* from Pond Biz. *Green Clean* is a great product. You simply sprinkle it over the water and as it settles it dissolves the debris and string algae clinging to the rocks, and after 15 minutes the debris floats to the top and is caught in the filter box- works great, but this was not the problem. Therefore I decided to use *AlgaeFix* very cautiously, carefully, gingerly, and slightly less than is recommended for a pond my size. I used it every three days (as recommended by the vendor) for two weeks, and finally my water started to clear up. I didn't want to do a water exchange since I would be diluting the *AlgaeFix* I just put into the pond. But, just to be on the safe side, I did a 25% water exchange after the two weeks of use just to be sure, and then repeated the aforementioned process for another two weeks. I also put a bubbler into the pond, again just to be safe. Once the algae is under control, the manufacturer suggest a lower maintenance dosage to prevent any future developments.

My water was now crystal clear, but I now had dead algae all over the rocks at the bottom of my pond. And since the water was now crystal clear, I could easily see the debris. Now what, so now at least I can use *Green Clean* to eliminate the debris at the bottom of the pond. I had a strategy in place, so I was feeling better. The problem is that my 4-5,000 gallon pond is not too deep, but it is about 700-900 square feet, which means multiple applications of *Green Clean* (which BTW is fairly expensive).

Members Bulletin Board Page
ALGAE anyone?
continued from previous page

I was now up to my 3rd gallon of Green Clean since I could apply it every 3 days to cover different areas of the pond. I had a grid of the pond laid out in my mind so I could do it all in 4-6 applications, which again meant another two weeks of walking into the pond every 3 days to sprinkle my rocks. This started to work and I had clear water AND I could see colors of the stones at the bottom of the pond- all was well with the world!

What did I learn- 1) to use *AlgaeFix* or *Green Clean* in maintenance dosages as soon as I clean and refill my pond next year. I later learned from Pond Biz that *Green Clean* can also be used to prevent the growth of algae before it gets a foot hold in the pond. I will also generously sprinkle *Green Clean* over the wet rocks while the pond is empty, and use it in maintenance mode.

2) If you have had algae problems in the past, don't wait to play catch-up.

3) Do NOT use *AlgaeFix* over zealously or in hot weather, and do read the instructions. And I would also suggest having a spare bubbler around, just in case.

4) As we all know, perform a 10% water exchange every week through the summer.

5) AND, last but definitely not least- **come to see Roger Sears from Complete Aquatics scheduled for our luncheon, January 29, 2012.** One of the topics Roger will be presenting on is algae control and prevention, I'll be there taking copious notes.

I hope this info was helpful (or at least amusing), and if you have any solutions that have worked for you, please send them along to me at sjpastman@yahoo.com and maybe I'll write an update article next year.

Good Luck... Stuart

Officers:

President:

Victor Barsky 215-840-0811

Vice Presidents:

Suzanne Durand 215-247-7279 new 2012

Michelle Cohen 610-299-5011 new 2012

Secretary:

Sandi Stouffer 610-566-0472

Treasurer:

Gail Brewer 610-853-6361

Members at large:

Rose Ball 610-642-3276

Suzanne Durand 215-247-7279

Bill Fogle 610-687-3105

Marshall Hatfield 856-546-0391

Lois Janney-856-234-4835

Alan Letofsky 610-649-1424

Chas Pierro 610-353-0595

Cindy Weiss 856-504-6666

Committees:

Membership:

Connie Snyder 610-399-1654

Newsletter Editor:

Connie Snyder 610-399-1654

Pond Tour Committee:

Rose Ball, Bill Fogle, Marshall Hatfield,

Lois Janney, Chas Pierro, Michael

Pierro, Bill Rose.

Programs Committee:

Suzanne Durand 215-247-7279

Sunshine Committee:

Sharon Deutsch 856-983-2729

Webmaster:

Alexander "Sandy" Grimwade

610-664-6084

Welcome Committee:

Michelle Cohen 610-299-5011

A cluster of several brown stinkbugs is positioned in the top left corner of the page.

Where have all the STINKBUGS gone?

from stinkbugwars.com

Another week... and even fewer stinkbugs. Really?! Can we trust that we have defeated this insidious enemy? Where is the "plague of biblical proportions" we were warned of?

Last year at this time, they were everywhere. Survival meant launching daily counterattacks against their dive-bombing, slithering, buzzing and intruding into hair, food, drinks, toiletries, closets, clothes... EVERYWHERE. Hours were spent spraying stinkbugs and killing stinkbugs and cleaning stinkbug carcasses, and by the time we finished, fresh enemy forces had already gathered.

But now... nothing. Patrols last mere minutes to simply sweep up a few random bodies. The new weapon of choice, a bottle filled with alcohol and eucalyptus oil, is only picked up briefly to spray a random stinkbug intruder or two. They are seemingly gone. GONE.

As in there are no more. Visitors ask after them.

"Where have all the stinkbugs gone?"
I have no idea.

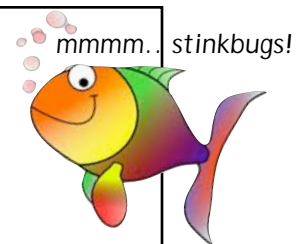
Of course, I have theories. Perhaps the stinkbug invaders found that we were too much effort to conquer, and so they have packed up their evil soldiers and are headed off to terrorize the next planet. Perhaps they contracted some sort of illness that we had not considered – much like in War of the Worlds – and are simply dying off as a result. Perhaps our efforts put enough of a dent in their breeding cycle – by killing them before they could breed – that they are not able to reproduce at the same shocking rate.

And perhaps, they are simply waiting...

Enjoy the respite, fellow warriors – and batten down the hatches. Stinkbugs will be back in full force before we know it.

PREPARE YOURSELVES!

I am looking for members stories and or photos for the newsletter. Please share your ponding and garden adventures. We would all like to see your photos, (winter ones too!) hear about your trials, errors and success stories. Send in any newsletter stuff to ccsnyder123@verizon.net for publishing in the



Where do frogs go in the winter?

From science IQ.com

Mammals are endotherms, meaning they maintain a constant body temperature no matter what the environmental conditions are. For example, humans, dogs and cats are mammals. When the weather gets cold, we can still maintain our regular 98.6F body temperature.

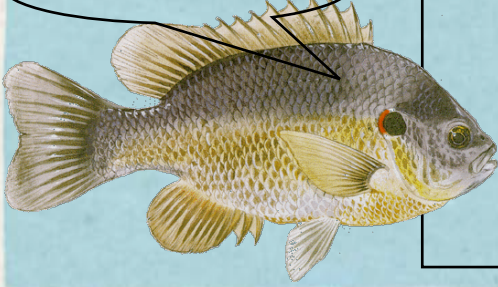
Some animals cannot do this; they are called ectotherms. The body temperature of ectotherms follows their environment, for example if it is cold outside, their body temperature falls. They must bask in the sun to get warm and cool off in the shade, or under the water. Amphibians, reptiles and insects are ectotherms.

During the spring, you may remember seeing many tadpoles in a pond or stream. Then in the summer the tadpoles grow arms and legs; they turn into a frog. Where exactly do the frogs go in the winter? I don't think anyone has seen a frog jumping around in the frigid winter months, especially in the northern United States. Frogs are ectotherms and because they have to keep themselves warm, the winter



would be especially tragic for them. Spring peepers, wood frogs, green frogs and others bury themselves in the mud around a wetland, such as a pond or stream. The interesting fact about frogs is that because they only bury themselves about an inch deep, some species of frogs actually freeze into a solid state. How do they stay alive, though? Well, they have special components in their body that actually act as antifreeze. Their body converts glycogen into glucose, which keeps the frog alive while it's frozen solid. When the ground becomes warm again in spring, the frogs thaw-out and remain active until winter comes around again.

I might be able to help!



Population Control Experiment

by Craig and Connie Snyder

What is the solution for those of us who have Koi that are so prolific that they fill our ponds to overload in a few short springtime spawnings?

For many years now our pond has produced an abundance of koi babies. Craig and I remove them from our outdoor pond in the fall, which has proven to be a chore of some magnitude, and keep them in a little indoor pond until it's time to find new homes for them in the spring.

Catching them is no easy task! In the past we have tried trapping them in the corner of the pond, only to watch them jump over the wooden barrier like circus performers. We tried minnow traps, which were only slightly successful. Finally we resorted to draining the pond to within a foot of water in which we were able to catch the little buggers and do a significant water change along the way. This worked because our pond is divided into two sections. So we could take out most of the water in the lower pond, catch those babies, then pump the water from the upper, down to the lower pond and repeat the process. This procedure took us all day and I remember many times catching the last of the babies with flashlights in the dark of night, all which provided a full day of entertainment for our neighbors.

Next summer we will change over to a brand new pond, in which catching koi babies will present a whole new problem. We have not starting digging yet, but I am already thinking, how will we catch those babies next fall? I have come up with a possible solution and the testing phase is in progress.

I asked my son to catch me a sunfish which he did. Guess what I named him? After giving Sunny a salt bath to help cure any ills he might have, we put him into our little indoor pond for the winter along with 4 test goldfish.

I am pleased to say that he or she is mingling well with the smaller goldfish and only chases them slightly to keep them away from his or her castle. For this reason I think Sunny might be a male. He refuses to eat the goldfish pellets but I found he loves corn. He now swims over to me when I approach the pond. His favorite foods are stinkbugs, which we have few of, but maybe more will be coming later. Then I found that if I took some of the large koi pellets and softened them in water he will eat them faster than lightning. Ok, so he is a little finicky, but I have all winter to convert him to dry pellets.

So, I may try to get some more sunfish in the spring and I may introduce them into our koi pond as population control now that I know they will probably not harm the koi but will eat the small fry (before I get attached to them hopefully). I will try to figure out which sunfish are male and which ones are female in order to keep only one sex. **I do not** want to be trying to catch baby sunfish next fall.....

now that would be another story, wouldn't it!

Email me if you have any comments or suggestions!
Connie and Craig Snyder



DVWGS memberships are based on a calendar year beginning on January 1st.

All members need to renew their membership on January 1st,
with the following exception;

*If you joined the club as a new member late in the year during Sept, Oct, Nov or Dec,
your \$25.00 membership fee will be good for the following year.*

DVWGS Membership Application

Check one: RENEW NEW
Check one: Family @ \$25.00 Commercial @ \$35.00
(includes web advertisement)

Check here if you wish to keep your contact information as
"unlisted" and only to be released to board members.

(PLEASE PRINT LEGIBLY)

Name (s) _____
Address: _____
Home Phone: _____
Email address: _____
Date and year: _____ Check # _____ or Paid in Cash _____

**Enclose a check with this application, made payable to DVWGS and mail to:
DVWGS * Connie Snyder * 1255 Buck Lane * West Chester, Pa. 19382**

As a volunteer organization, we encourage you to be an active participant in our activities.
Please indicate your interests by checking off all that apply:

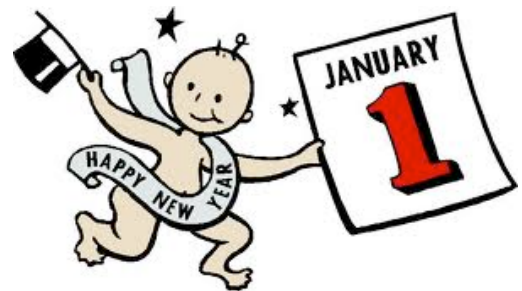
Display my pond on Pond Tour Help with pond Tour
 I'd like to schedule a social at my house.
 Staff exhibits or booths at various functions.
 Check here and leave suggestions or comments on back or on attached sheet. What
would you like to learn more about? What have you liked or disliked about the club in the
past year? Please feel free to suggest possible group activities or places you would like to
visit, or topics you would like discussed. (Thank you for your input!)

Connie Snyder
Editor
1255 Buck Lane
West Chester, PA 19382

NOTE: Two Newsletters per year, one in December/January (Kickoff luncheon) and one in July (pond tour) will be delivered to members in hardcopy by US mail.

Additional newsletters throughout the year will be email only editions. If you would like a email address added, or changed please contact Connie Snyder at ccsnyder123@verizon.net.

Its time to RENEW your DVWGS Membership. Membership is based on a calendar year beginning on Jan 1st. Membership form can be found in this newsletter or on our web site. You may bring a check and renew your membership at the Luncheon. Check your address label for your current status. Some members have paid ahead for the coming year. Some new members joined in Sept, Oct, Nov, or Dec of this past year and are also current for 2012.



Dont forget to check out our web page at www.dvwgs.org